

How to set up the ZB MED proxy server

(using Mozilla Firefox)

Follow these instructions to install the free-of-charge Firefox and Chrome add-on “FoxyProxy” and set up ZB MED’s proxy server.

If you have already installed FoxyProxy or similar software, please use the following settings to configure ZB MED’s proxy server.

Proxy name: ZB MED proxy server
Host: proxy.zbmed.de
Port: 8081
Subscription URL: <http://proxy.zbmed.de/pattern.json>
Authentication: Username (the 11 digit card number on the back of your library card) and password (by default your 6-digit date of birth)

Step-by-step instructions

1. To install FoxyProxy, go to the following website:
<https://addons.mozilla.org/de/firefox/addon/foxyproxy-standard/>
 Click the button “Continue to Download”.

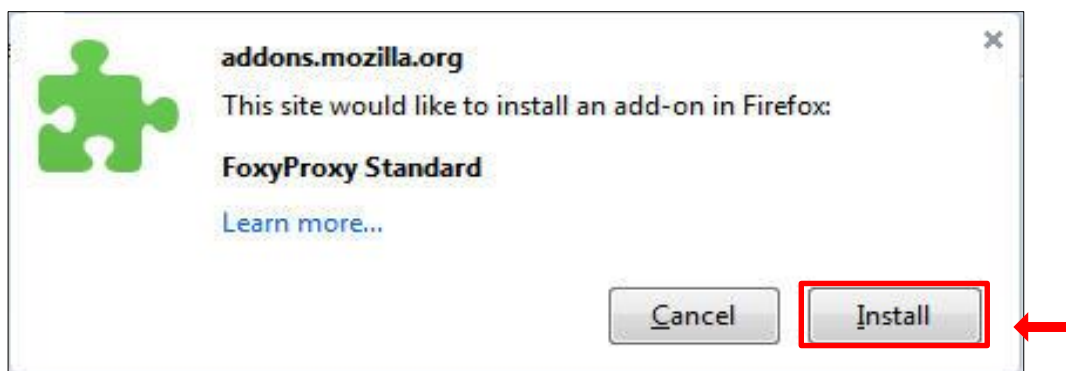
The screenshot shows the Mozilla Add-ons page for FoxyProxy Standard 4.5.6. The page includes a search bar, navigation links, and a main content area with the following details:

- ADD-ONS** (EXTENSIONS | THEMES | COLLECTIONS | MORE...)
- Search for add-ons
- Extensions » FoxyProxy Standard
- FoxyProxy Standard 4.5.6** by Eric H. Jung, groeg, Jesper Staun Hansen
- 4.5 stars (355 user reviews, 297,079 users)
- Buttons: Add to collection, Share this Add-on
- Continue to Download** (highlighted with a red box and a red arrow)
- Enjoy this add-on? (The developer of this add-on asks that you help support its continued development by making a small donation. Contribute \$9.99 suggested)
- Preview images: FoxyProxy logo, settings window, and interface screenshot.

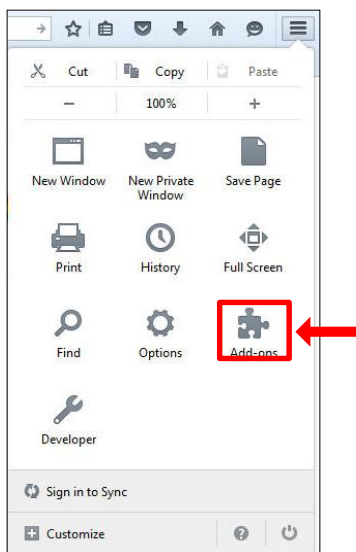
2. Click the button “+ Add to Firefox”.



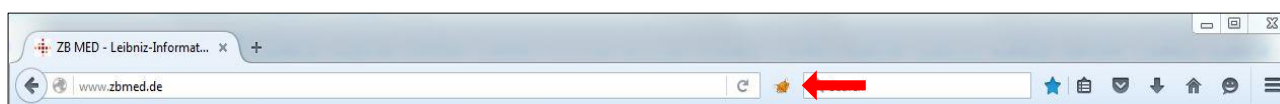
3. A window will appear in the top left corner. Click “Install” and restart Mozilla Firefox.



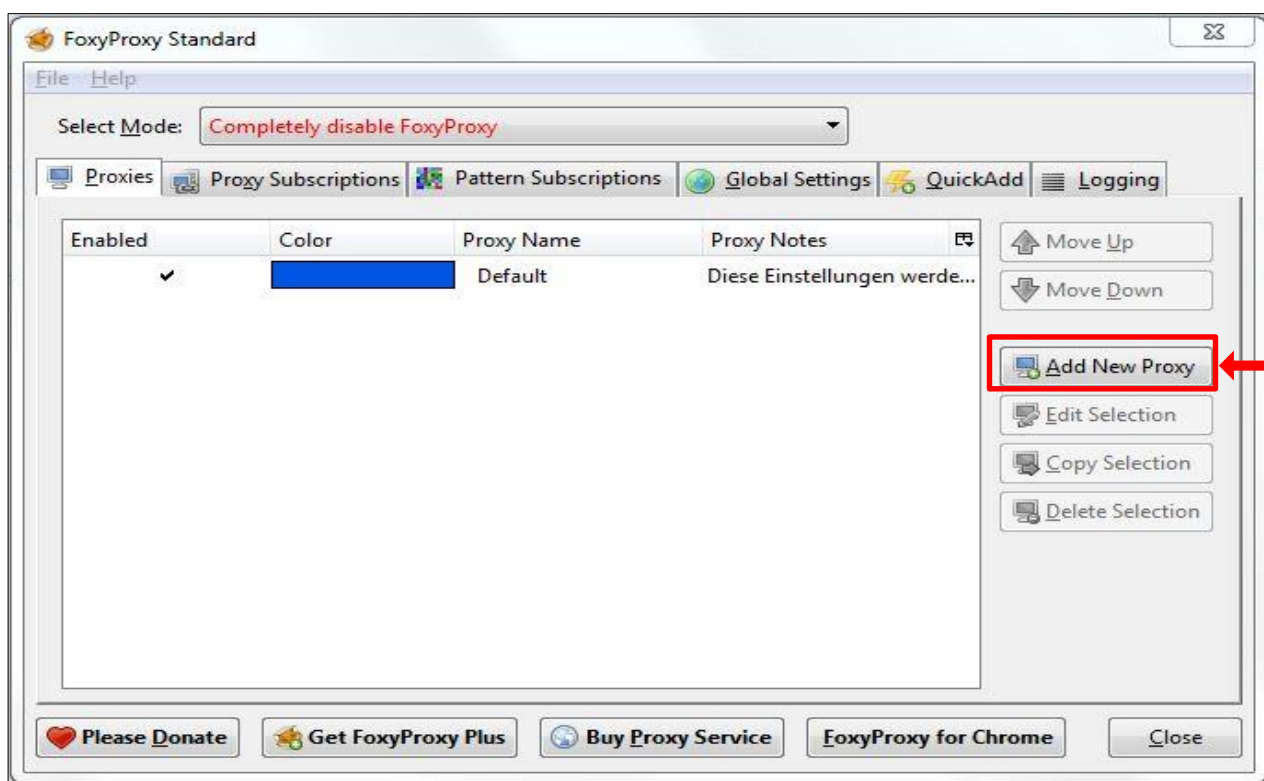
4. After restarting, you can open the FoxyProxy settings via Menu → Add-ons → Extensions. Double-click Foxy Proxy Standard and click “Options”:



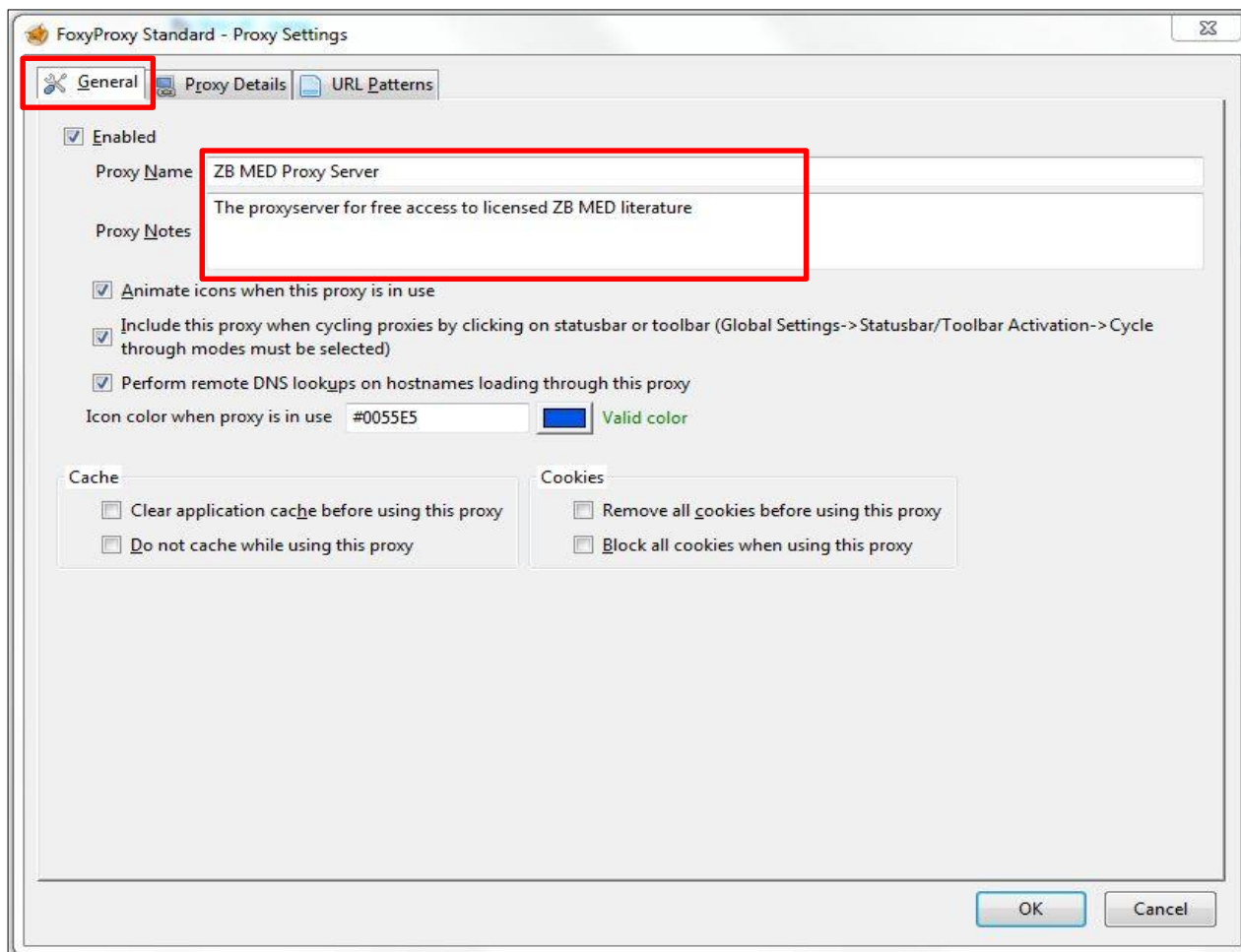
Alternatively click on the small icon next to your address bar:



5. A new window will open. Select “Add New Proxy”.



6. First enter the proxy's name "ZB MED Proxy Server" and notes in the "General" tab. Then open the "Proxy Details" tab.

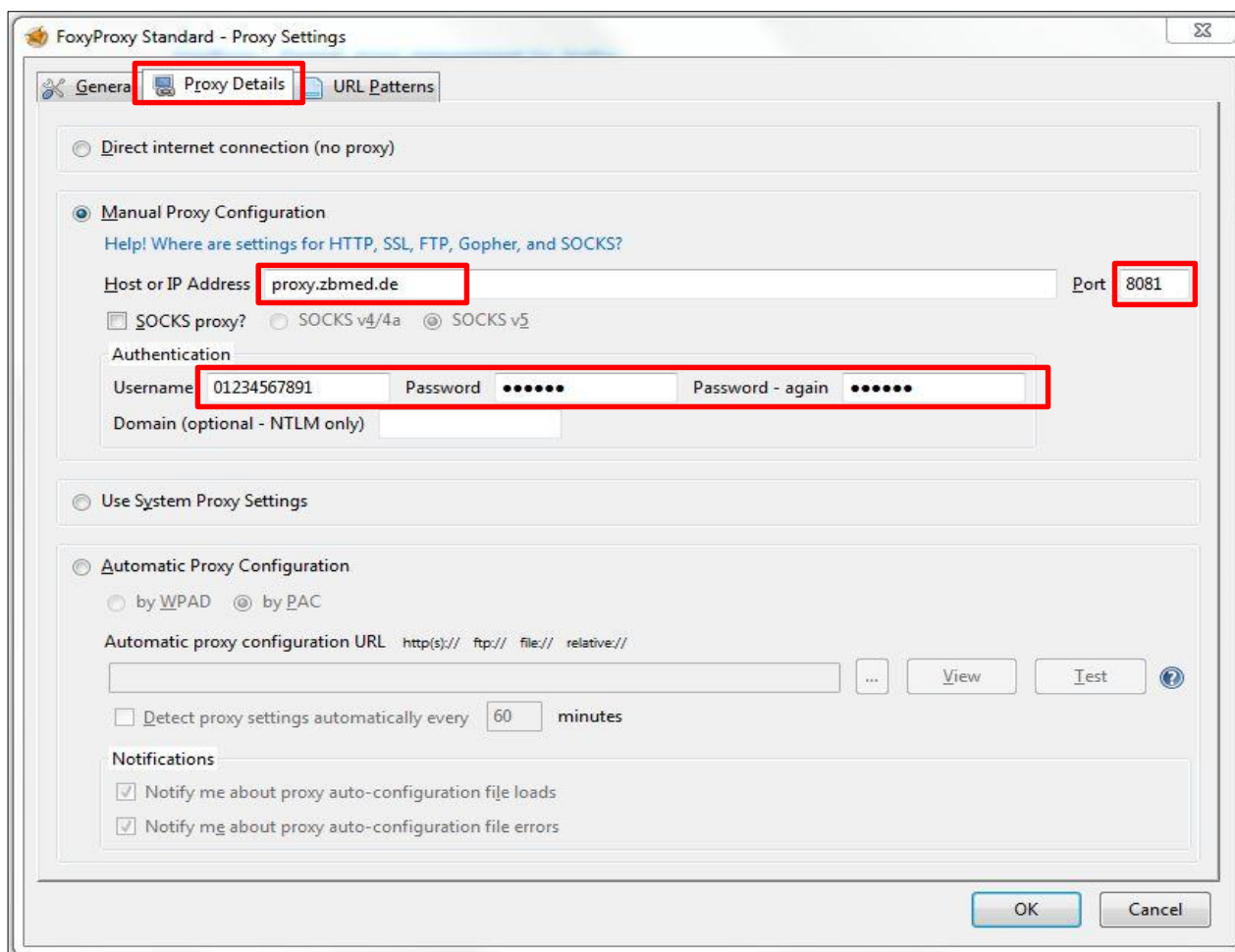


7. Switch to the “Proxy Details” tab and enter the host, port, username and password:

Host: proxy.zbmed.de
Port: 8081
Authentication: Username and Password

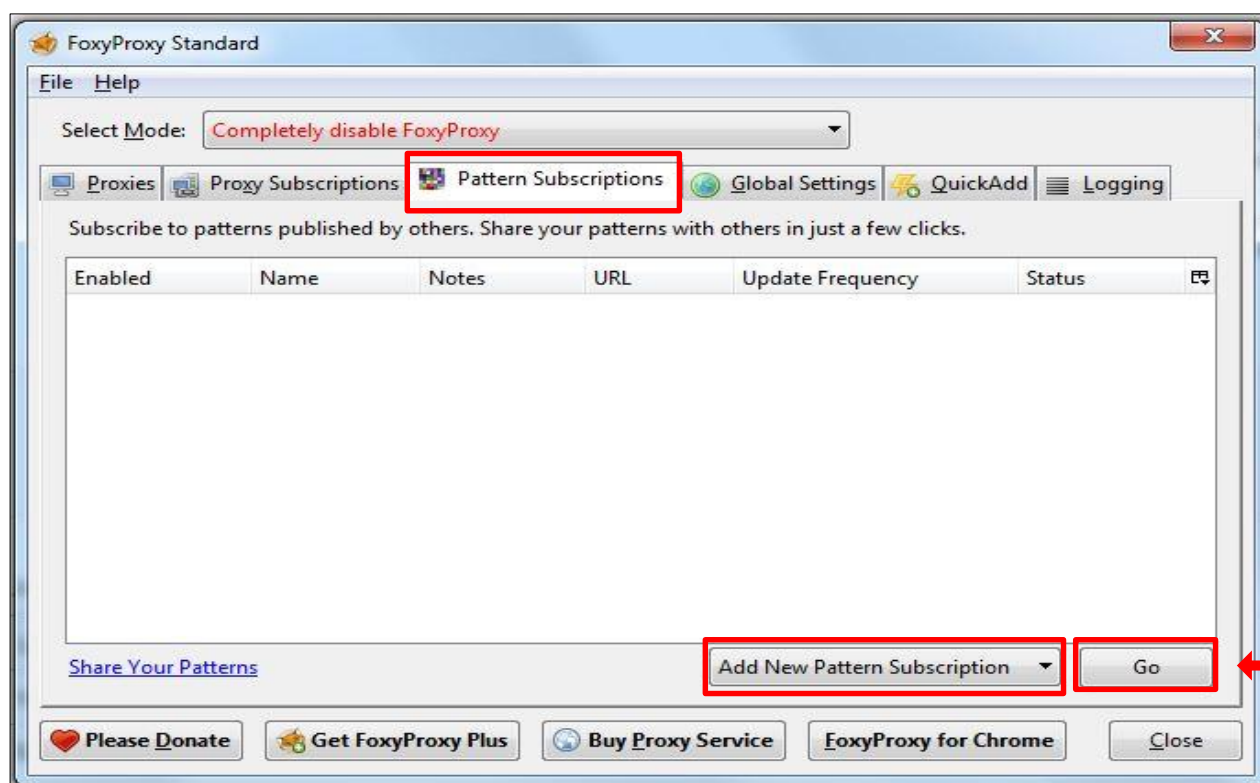
Your username is the 11-digit card number you will find on the back of your library card. If you have forgotten your password (by default it is your 6-digit date of birth in the format ddmmyy), feel free to contact us at the information desk in Cologne.

When you have entered all the details, confirm them by clicking OK.



Note: You do not have to make any changes in the "URL Patterns" tab. If you successfully follow the steps described below to generate the FoxyProxy Pattern Subscription, the proxy will automatically import the whitelisted URLs.

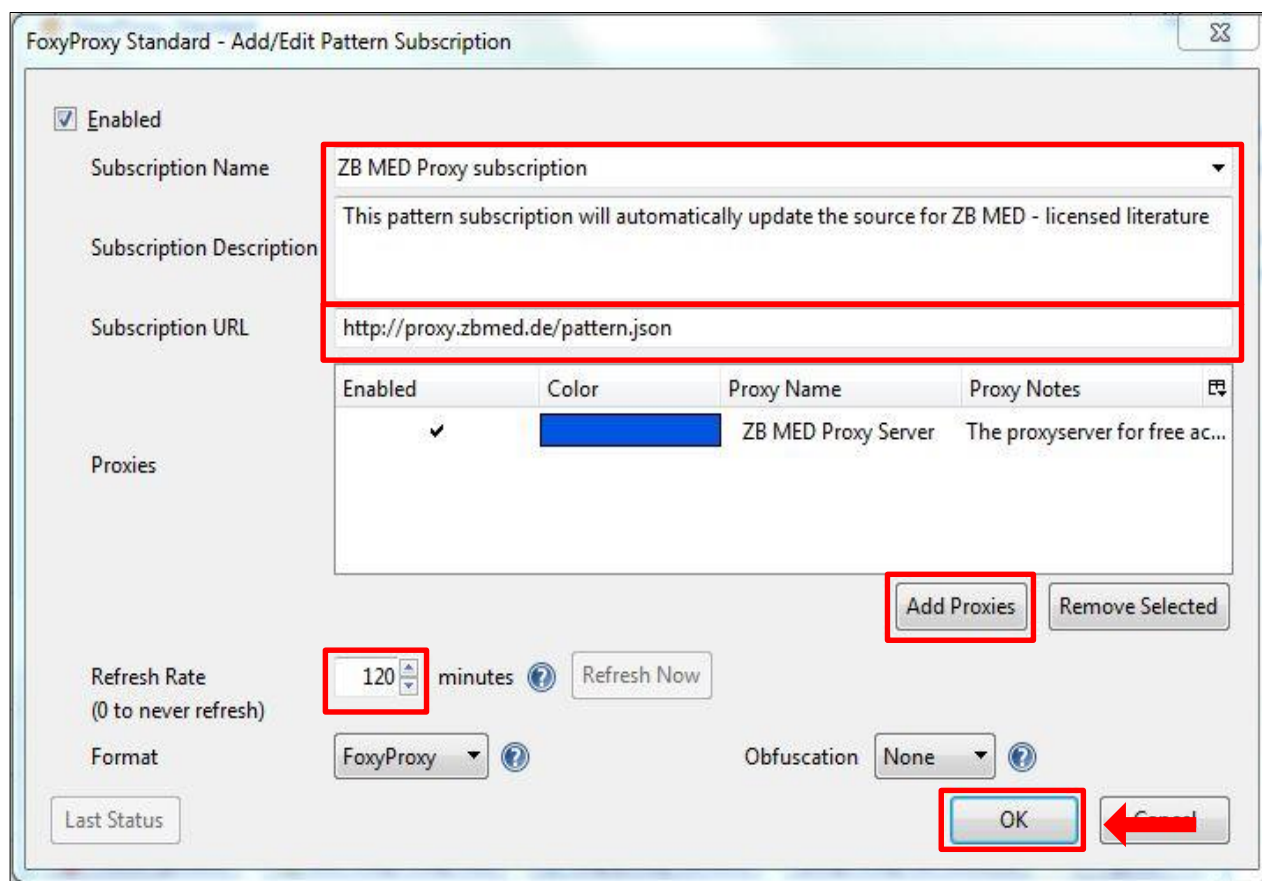
8. The proxy server only unlocks certain URLs, so you also need to install a FoxyProxy Pattern Subscription. Select “Add New Pattern Subscription” and click “Go”.



9. Enter <http://proxy.zbmed.de/pattern.json> in the Subscription URL field. Choose a subscription name and description and set the refresh rate to “120 minutes”.

Click “Add Proxies” and a new window will appear. Double-click the newly created proxy.

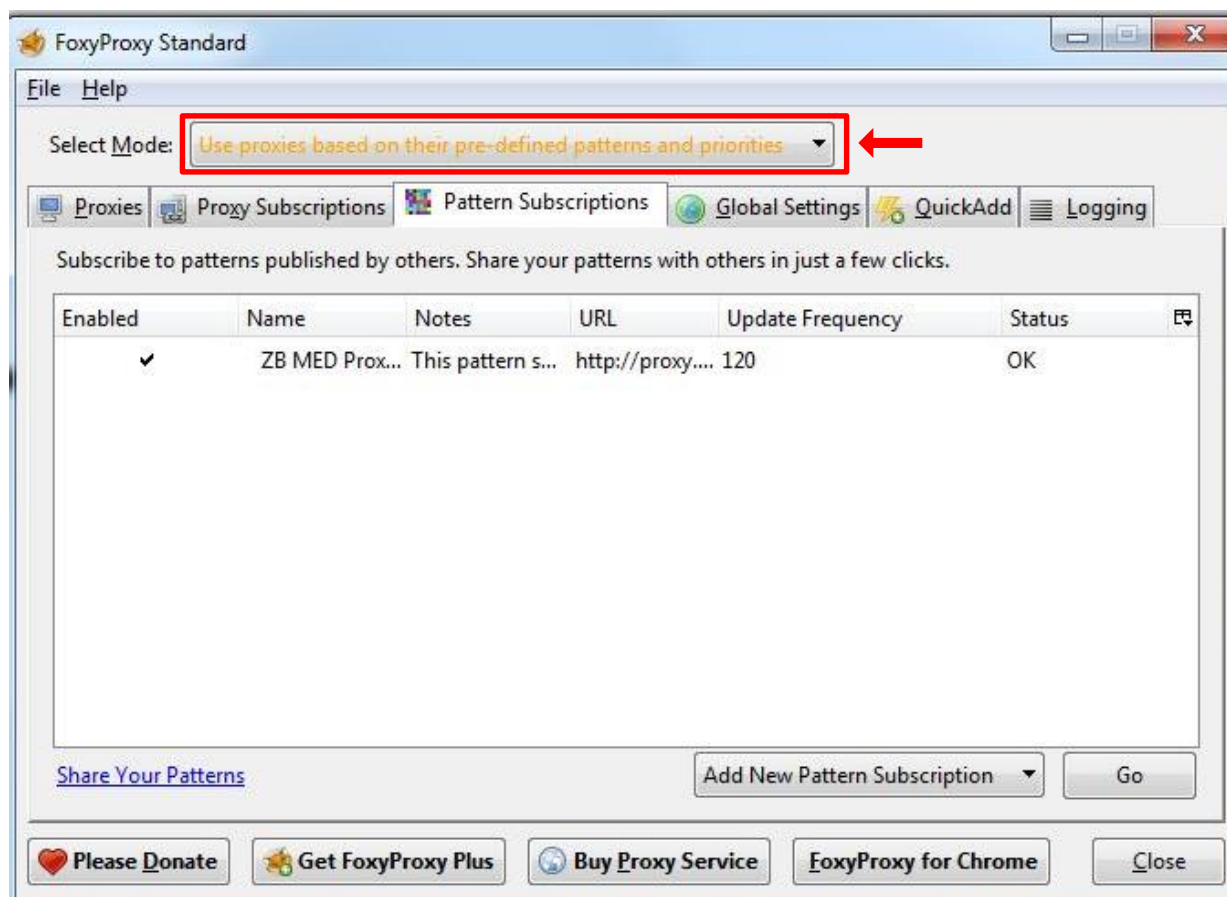
Then confirm by clicking OK.



As soon as you click OK, the pattern subscription data import process will start running in the background. Once this process is complete, the following pop-up message will appear: “The pattern subscription import succeeded”.

10. To activate these settings, choose the following mode in the “Select Mode” drop-down box: “Use proxies based on their pre-defined patterns and priorities”. This activates FoxyProxy.

If you want to turn off FoxyProxy, select “Completely disable FoxyProxy”.



Finally, check that all the proxy settings are correct by opening the following URL in Firefox: <http://www.wieistmeineip.de/>

If you have set up the proxy successfully, the IP address on the top of the page will be:

134.95.56.240

The test only works with URL cited above (www.wieistmeineip.de). If you go to a different website, it will not show the IP of the ZB MED-proxy server, but rather the IP of your current internet service provider.

If you have any questions or need more help please contact us at:

fernzugriff@zbmed.de