



**ZB MED – Information Centre
for Life Sciences**

Feeding the research cycle.

Publish open access with ZB MED.

PUBLISSO –

your publishing platform for life sciences

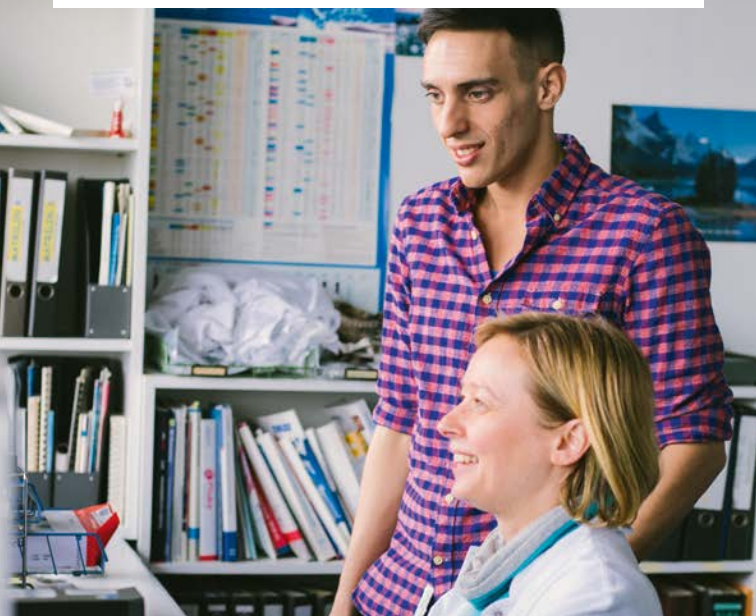
- ▶ **German Medical Science (GMS):** open access portal for academic and scientific publications (journals, conference reports, research). www.egms.de
- ▶ **Living Handbooks:** platform for the collaborative creation of monographs in the field of life sciences. www.gms-books.de
- ▶ **Specialist Repository for Life Sciences:** document server for the permanent, secure archiving of scientific and academic publications.
- ▶ **DOI-service:** registration agency for digital object identifiers (DOIs), which provide unique, persistent identification of research data and full texts.
- ▶ **LeibnizOpen:** repository for open access publications from the Leibniz institutes.

ZB MED is represented on various committees and participates in numerous collaborative projects as part of its efforts to promote open access. ZB MED can advise you on every aspect of open access publishing – by email, on the phone, or in person.

▶ www.publisso.de

Life sciences research based on up-to-date knowledge

Trust LIVIVO to find it.



LIVIVO – your search portal for life sciences

- ▶ Literature from the fields of medicine, health, and nutritional, environmental and agricultural science
- ▶ Search more than 55 million records from over 45 specialist databases simultaneously
- ▶ Semantic search technologies make searching easier
- ▶ Our specialist vocabularies help you get even more accurate results
- ▶ Access to full texts, ejournals and other media online, plus delivery of books and other full texts
- ▶ Integration of research data
- ▶ Direct access to all the features and functions of the ZB MED catalogue
- ▶ Open access data sources

▶ www.livivo.de

ZB MED – Information Centre for Life Sciences

Life sciences are a tightly intermeshed field of knowledge. Specialising in medicine, health, and nutritional, environmental and agricultural sciences, ZB MED is a central service hub that combines all the required expertise in these fields under one roof.

ZB MED evolved from the world's biggest library in this combination of subject areas and has steadily transformed itself into a key piece of information infrastructure for scientific research. Its primary goal is to support researchers in these disciplines by providing added value services specifically tailored to the world of research.

To help it develop new services and launch projects for the scientific and research communities, ZB MED has established partnerships and networks with national and international institutions, libraries and professional associations.

ZB MED also conducts applied research in the field of knowledge discovery with the aim of continuously improving the services and support it provides to academics and researchers.

Life sciences are the future.

We support the work of researchers and academics.



- ▶ ZB MED is a foundation under public law
- ▶ ZB MED Co-funded by the German Federal Ministry of Health and the German federal state of North Rhine-Westphalia, its mission is to provide reliable, ongoing access to information in the field of life sciences.
- ▶ ZB MED provides access to 1.6 million volumes at its sites in Cologne and Bonn.
- ▶ ZB MED negotiates with publishers to acquire licenses for electronic resources, focusing in particular on key research methods such as text mining.
- ▶ ZB MED is committed to the principle of providing open access to research data.
- ▶ ZB MED's digital preservation strategy aims to ensure that digital resources remain accessible and usable.

▶ www.zbmed.de

ZB MED sites in Cologne and Bonn

ZB MED – Information Centre for Life Sciences

Cologne site

Medicine and health

Gleueler Strasse 60
50931 Cologne
Germany

Opening hours

Library/reading rooms
Mon – Fri: 9 a.m. – 7 p.m.

Lending desk

Mon – Fri: 2 p.m. – 4 p.m.

ZB MED-InfoCenter

+49 (0)221 478-5685

info@zbmed.de

www.zbmed.de

Bonn site

Nutritional, environmental
and agricultural sciences

Friedrich-Hirzebruch-Allee 4
53115 Bonn
Germany

Opening hours

Reading rooms, open stacks
Mon – Fri: 8 a.m. – 12 midnight
Sat – Sun: 10 a.m. – 12 midnight

Loans and returns

Mon – Sun: 10 a.m. – 12 midnight

Supported by the Ministry of Culture and Science of North Rhine-Westphalia and by the Federal Ministry of Health on the basis of a resolution of the German Bundestag.

12/2022

▶ www.zbmed.de

Follow us:

